

# ANRI

## Logo Reference Guide

(Compiled by Chris Cargill)



2020

# Logos and Timeline

1912 – First ANRI Trademark introduced and first catalog.



1914 – 1918 (World War I, No ANRI Production)

1921 – First ANRI paper label.



1922 – Logo Change



1925 – Logo Change



**1926** – Logo Change



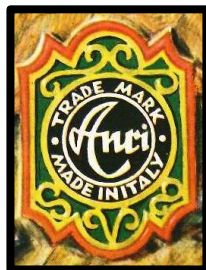
**1936** – ANRI starts export to the United States

**1939 – 1945** (World War II, No ANRI Production)

**1948 to 1963** – Kaslatter designs carved by Josef Demetz (Only three designs distributed by ANRI)



**1950** – Logo Change



**1952** Logo (40 Year Anniversary)



1952 – Machine aided Production starts

1952 to 1954 Logo



1954 to 1967 Logo



1955 Logo



1955 – Prof. Karl Kuolt Nativity Introduced.





1958 – Ivory carvings introduced.



1958 – Toriart products introduced.

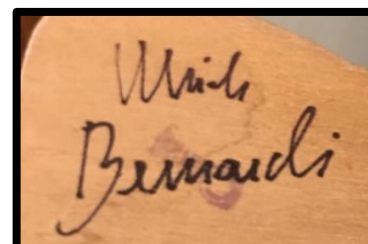


1959 – ANRI Form introduced. (ANRI Teak in 1962).



1961 – Helmut Diller lines introduced

1962 – Bernardi creche introduced.

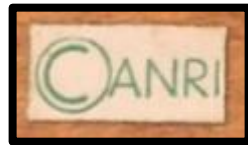


1962 – ANRI Antique line introduced.



1967 Logo

ANRI



1969 – Juan Ferrandiz line introduced.



1976 – Raggedy Ann and Andy line introduced

1979 Logo



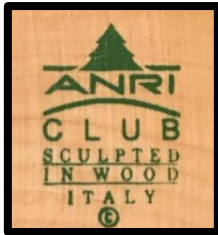
1982 – Metal disc logo introduced.



1982 – TORIART Logo Change



**1983** – Start of Club ANRI.



**1983** – Sarah Kay lines introduced (Interpreted by Master Carver Ulrich Bernardi)



**1986** – Florentiner Nativity introduced.

**1987** – Disney lines introduced.



**1988** – Swarovski lines introduced.



**1995** – Vatican Nativity introduced.



**1997** – Fini Moroder Nativity introduced.

**2000** – Block Nativity introduced.

